

Delong Reunion Website (for latest news):

<http://timetraces.ca/delong/reunion2011/reunion2011.htm>

Close up map of the Park and Zoo grounds:

<http://www.puc.org/files/zoo/zfiles/map.html>

Riverview Park and Zoo main site:

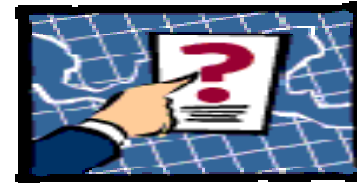
<http://www.puc.org/files/zoo/zoo.html>

The City of Peterborough maintains a website at:

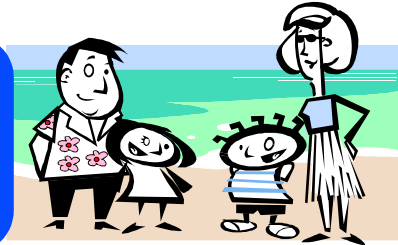
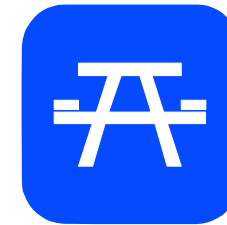
<http://www.city.peterborough.on.ca/>

For a wider range of Kawartha links try:

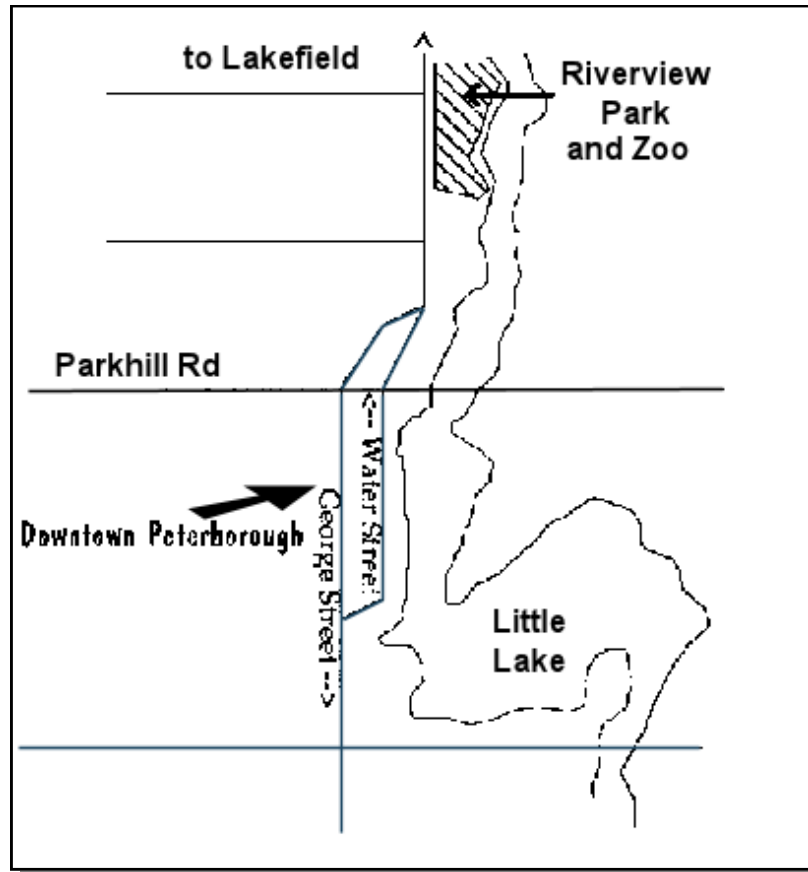
<http://www.quidnovis.com/>



The 2011 DELONG FAMILY REUNION and PICNIC



Peterborough, Ontario
Sunday, August 14, 2011
Riverview Park & Zoo
11:00 a.m. - 5:00 p.m.



DELONG Family Reunion for the Year 2008

When: Sunday, August 14, 2011
11:00 a.m. - 5:00 p.m.

Where: Riverview Park and Zoo
Peterborough, Ontario
Shelter #2

What to bring:

- the Family!
- a picnic lunch
- family trees
- old photos and documents
- USB stick/computer
- camera
- lawn chairs!
- balls, bats, mitts
- sun hat
- life jacket for little kids

Who should come:

If a DELONG appears somewhere in your family tree, we are eager to meet you. Perhaps your grandmother or great-grandmother was a DELONG. If so, please join us; you may find out more about your family and help others do the same. Everyone is encouraged to bring information to share, to mingle and to have a pleasant day. It is not necessary to have DELONG as your last name.

Please, pass copies of this invitation to those who would enjoy making or renewing family friendships, and to folks who may be interested in finding out more about the history of the DELONGs.

If you have information about new additions to families or newly discovered relatives who should be included in our family tree display use the contact information below. You may write, phone, send e-mail, or visit the home page.

Dan and Anne DELONG
67 Scugog Street
Bowmanville, Ontario
L1C 3H9

Phone - 1-905-623-6975
E-mail -
dandelong@timetraces.com



Melville Delong with sisters - top left Irene Agnew, Audrey Brown, Verna Harran ,Olive Jackson and husband Clifford - front Edna King, Mel, and Ethel Mitchell. The snapshot is dated May 1955. One brother and five sisters are missing.

Riverview Park and Zoo is situated on the west bank of the Otonabee River in the northern part of Peterborough. Access to the parking lot is from Water Street, a north/south main street which becomes Hwy. 29, leading to Lakefield. Signs will be posted near the entrance.

In Case of Poor Weather

Only in the case of severe, inclement weather will the picnic be cancelled. However, we will make last minute arrangements for an alternate display of genealogical information, along with a computer and photocopier. A local number to call for such last minute information is 1-705-742-4585 (the Peterborough home of Betty Delong).

Photo CD: how to improve/update

A Photo CD has been available at previous reunions. We are now able make copies of the 2008 CD during the reunion. If you obtained a CD, and you notice inaccuracies, please send corrections in advance of the reunion.

So far the photos are heavily weighted toward the Peterborough area families. If you wish to broaden the scope of the Delong photo collection further, please send them along by mail, or e-mail. Large files can be sent via a free Web service called "YouSendIt".

- | | | | |
|------------|----------------|-----------------------|--------------------------|
| • PICNIC | • RELAX | • FEED THE ANIMALS | • UPDATE THE FAMILY TREE |
| • MUNCH | • CHAT | • PHOTOCOPY | • STROLL |
| • SUNBATHE | • FRISBEE GOLF | • CREATIVE PLAYGROUND | • PHOTO OPPORTUNITY |